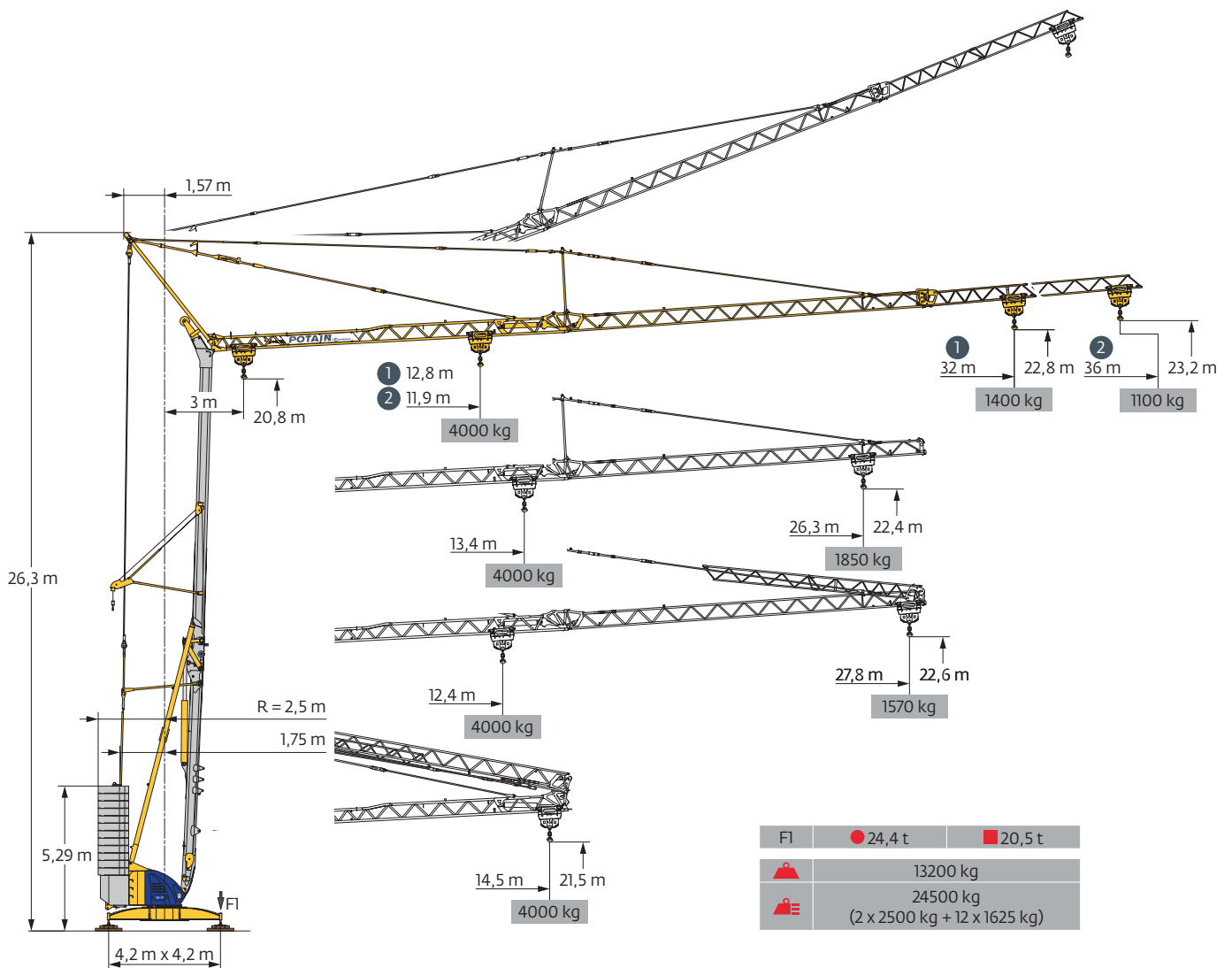
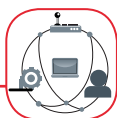


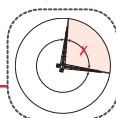
Potain Igo 42



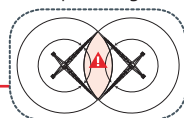
SmartCom



Top Zone

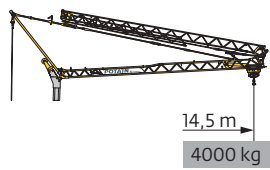


Top Tracing II

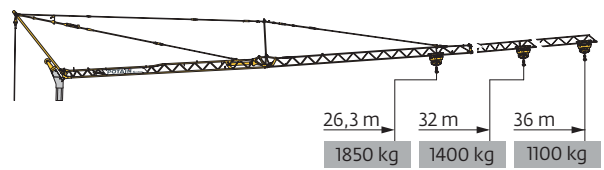


EN 14439 C25-D25
EN 14439 C50-D50
FEM 1.001-A3

Courbes de charges / Lastkurven / Load curves / Curvas de cargas / Curve di carico
 Curvas de carga / Кривые нагрузок



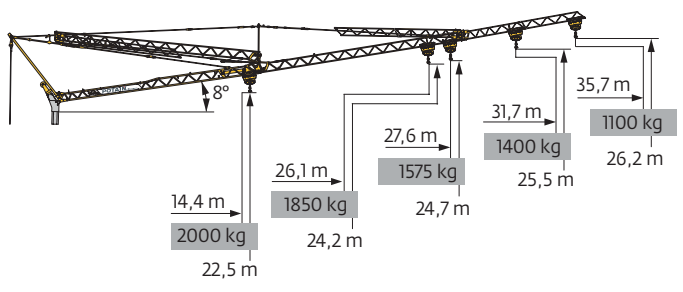
36 m	3	▶ 14,5 m	4000 kg
▲▲▲			2000 kg
▲▲▲			2000 kg
32 m	3	▶ 14,5 m	4000 kg
▲▲▲			2000 kg
▲▲▲			2000 kg
26,3	3	▶ 14,5 m	4000 kg
▲▲▲			2000 kg
▲▲▲			2000 kg



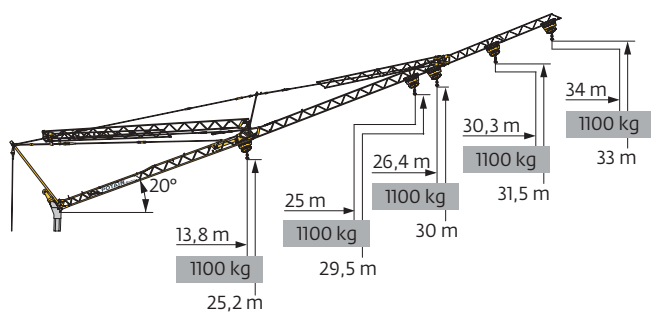
3	▶ 11,9	12	14	16	18	20	20,8	21,8	22	24	26	28	30	32	34	36	m
▲▲▲																	kg
																	kg
																	kg
3	▶ 12,8	14	16	18	20	22	22,6	23,6	24	26	28	30	32				m
▲▲▲																	kg
																	kg
																	kg
3	▶ 13,4	14	16	18	20	22	23,6	24	24,6	26,3							m
▲▲▲																	kg
																	kg
																	kg



36 m	3	▶ 12,4	14	16	18	20	21,7	22	22,6	24	26	27,8	m
▲▲▲													kg
													kg
													kg










36 m	3	▶ 20,6	21,5	22	24	26	28	30	32	34	35,7	m
▲▲▲												kg
												kg
												kg
32 m	3	▶ 22,4	23,3	24	26	28	30	31,7				m
▲▲▲												kg
												kg
												kg
26,3 m	3	▶ 23,6	24,6	25	26,1							m
▲▲▲												kg
												kg
36 m	3	▶ 21,6	22	22,5	24	26	27,6					m
▲▲▲												kg
												kg
36 m	3	▶ 14,4										m
▲▲▲												kg
												kg



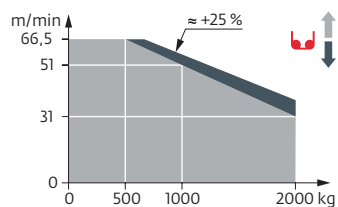
36 m	3	▶									34	m
▲▲▲												kg
												kg
32 m	3	▶									30,3	m
▲▲▲												kg
												kg
26,3 m	3	▶	25									m
▲▲▲												kg
												kg
36 m	3	▶									26,4	m
▲▲▲												kg
												kg
36 m	3	▶	13,8									m
▲▲▲												kg
												kg

Mécanismes / Triebwerke / Mechanisms / Mecanismos / Meccanismi
 Mecanismos / Механизмы

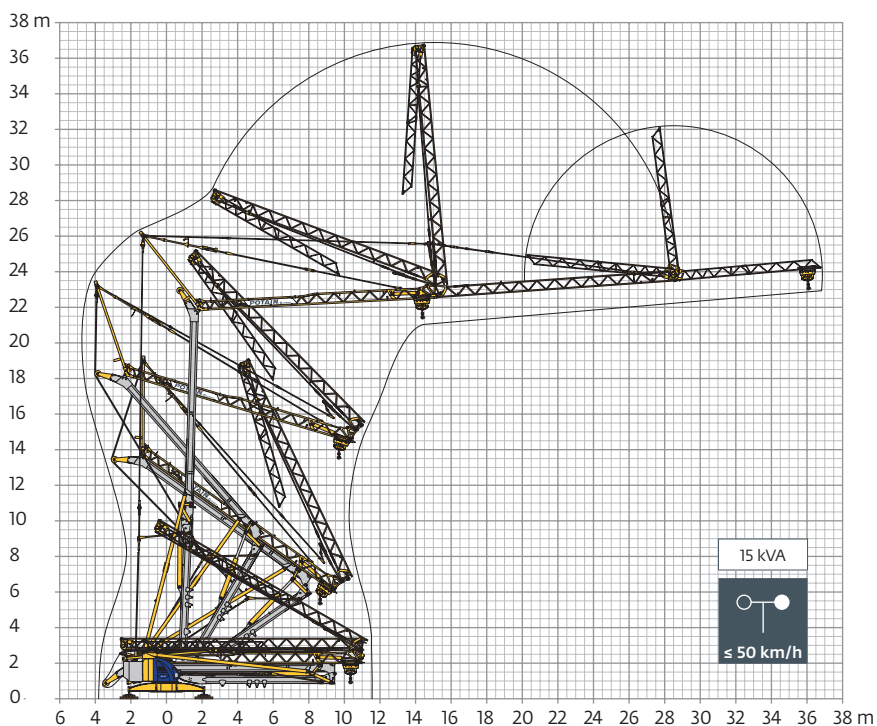
400 V - 50 Hz 480 V - 60 Hz													ch - PS hp	kW
	15 LVF 10 Optima	m/min	3,6	18	31	51	66,5	1,8	9	15,5	25,5	33	15	11
		kg	2000	2000	2000	1000	500	4000	4000	4000	2000	1000		
	3 DVF 5	m/min	15 - 30 - 45 (0 → 1000 kg) 15 - 30 - 41 (1000 → 4000 kg)									3	2,2	
	RVF 41 Optima+	tr/min U/min rpm	0 → 0,8									2	3	

 IEC 60204-32	 kVA
400 V (+10% -10%) 50 Hz / 480 V (+6% -10%) 60 Hz	15 kVA

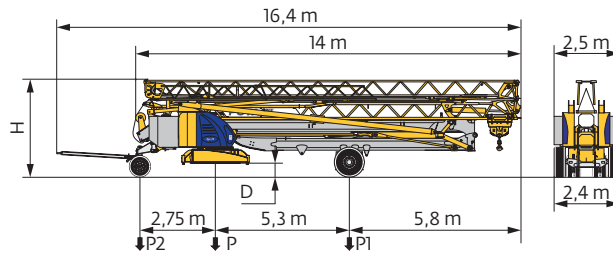
15 LVF 10 Optima



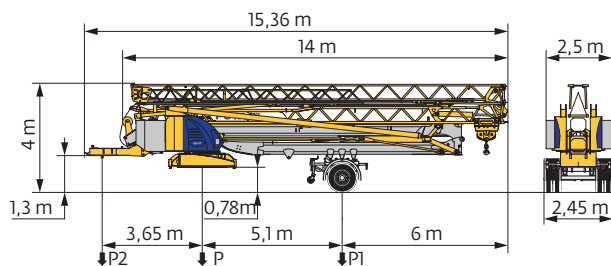
Montage / Montage / Erection / Montaje / Montaggio
 Montagem / Монтаж



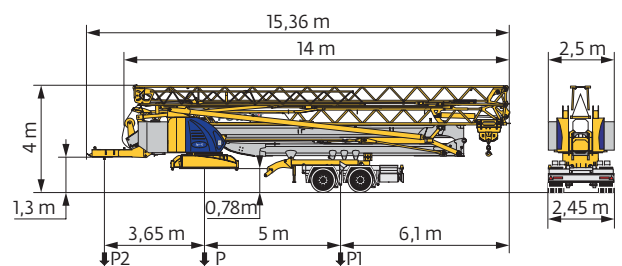
Transport / Transport / Transport / Transporte / Trasporto
Transporte / Транспортировка



	km/h	D (m)	H (m)	P (kg)	P1 (kg)	P2 (kg)
DJ100/S120	10	0,36/0,21	3,52/3,37	20010	10605	9405
DJ105/S125	25	0,36/0,21	3,52/3,37	20300	10815	9485
..... /..... i						



	km/h	P (kg)	P1 (kg)	P2 (kg)
SL121/J135	25	21060	12790	8270
..... /..... i				



	km/h	P (kg)	P1 (kg)	P2 (kg)
SL122/J215M	80	21980	14100	7880

	FR	DE	EN	ES	IT	PT	RU
R	Rayon de giration	Schwenk radius	Rear slewing radius	Radio de giro	Raggio di rotazione	Raio de rotação	Задний габарит
i	Nous consulter	Auf Anfrage	Consult us	Consultarnos	Consultateci	Consultar-nos	Проконсультируйтесь у нас
●	Réactions en service	Reaktionskräfte in Betrieb	Reactions in service	Reacciones en servicio	Reazioni in servizio	Reacções em serviço	Реакция при работе
■	Réactions hors service	Reaktionskräfte außer Betrieb	Reactions out of service	Reacciones fuera de servicio	Reazioni fuori servizio	Reacções fora de serviço	Реакция в покое
▲	Poids à vide, sans lest, sans trains de transport, avec flèche maxi. et hauteur standard.	Gewicht ohne Last, ohne Ballast, ohne Transportachsen mit max. Auslager und Standardhöhe	Weight without load, without ballast, without transport axes, with max. jib and standard height	Peso en vacío, sin lastre, sin trenes de transporte con flecha y altura estándar	Peso a vuoto, senza zavorra, senza assali di trasporto, con braccio max e altezza standard.	Peso em vazio, sem lastro, sem eixos de transporte com lança máxima e altura standard.	Вес без груза, без балласта, без осей для транспортировки, с максимальным вылетом стрелы и стандартной высотой
▲	Poids total du lest	Ballast-Gesamtgewicht	Total ballast weight	Peso total del lastre	Peso totale della zavorra	Peso total do lastro	Общий вес балласта
□	Équipements standards	Standardausrüstungen	Standard equipment	Equipamiento de serie	Equipaggiamento standard	Equipamento de série	Стандартное оборудование
□	Équipements optionnels	Sonderausrüstungen	Options	Equipamiento opcional	Equipaggiamento in opzione	Equipamento opcional	Дополнительное оборудование (опция)
♦	Levage	Heben	Hoisting	Elevación	Sollevamento	Elevação	Подъем
♦	Distribution	Katzfahren	Trolleying	Distribución	Distribuzione	Distribuição	Перемещение по стреле
◂	Orientation	Schwenken	Slewing	Orientación	Rotazione	Rotação	Поворот
kVA	Puissance requise	Erforderliche Leistung	Required power	Potencia Necesaria	Potenza richiesta	Potência Necessária	Потребляемая мощность
⚠	Document commercial non contractuel. Pour toute information technique se référer à la notice correspondante.	Unverbindliches Vertriebsdokument. Für technische Informationen, siehe die entsprechenden Anweisungen.	This commercial document is not legally binding. For any technical information, please refer to the corresponding instructions.	Documento comercial no contractual. Para cualquier información técnica, ver la noticia correspondiente.	Documento commerciale non vincolante, per tutte le informazioni tecniche fare riferimento al catalogo istruzioni.	Documento comercial não contratual. Para qualquer informação técnica complementar consultar as respectivas instruções.	Этот коммерческий документ не является юридически обязательным. Для получения технической информации, см. соответствующие инструкции.



www.manitowoc.com

Americas
Manitowoc, Wisconsin, USA
Tel: +1 920 684 6621
Fax: +1 920 683 6277

Shady Grove, Pennsylvania, USA
Tel: +1 717 597 8121
Fax: +1 717 597 4062

Europe, Middle East, Africa
Dardilly, France
Tel: +33 (0)4 72 18 20 20
Fax: +33 (0)4 72 18 20 00

China
Shanghai, China
Tel: +86 21 6457 0066
Fax: +86 21 6457 4955

Greater Asia-Pacific
Singapore
Tel: +65 6264 1188
Fax: +65 6862 4040